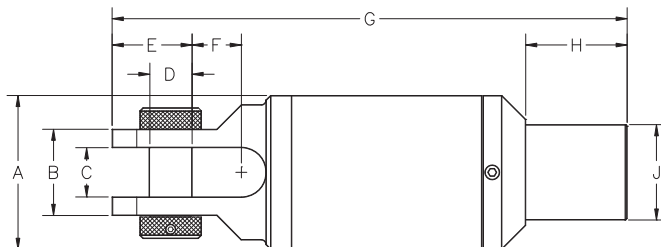


MAXI DUB-Swivel®

Type 1 - API Box / Clevis for MAXI Rigs

The load range of Maxi-Rig swivels is designed to fit the capacities of the most common rig manufacturers. Other thread configurations may be available as a special order.

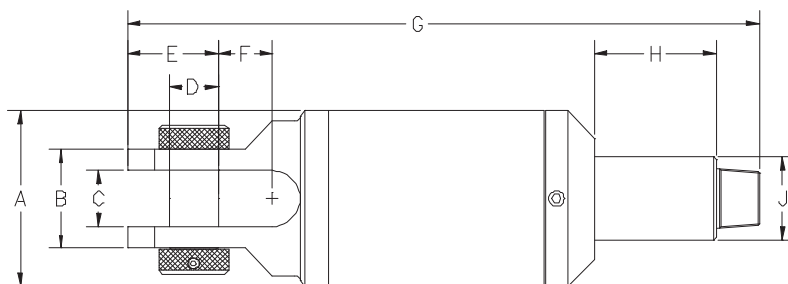
This series of swivels is designed with service in mind. The Seal Cover is removable and all seals can be replaced in the field without need for major disassembly. DCD has a factory authorized facility for complete assessments and repairs, as a part of a preventative maintenance program that will keep the swivel operating longer.



| Part Number | Safe Working Limit | Ultimate Load | Box Thread | A | B | C | D | E | F | G | H | J | Net Weight |
|-------------|----------------------|------------------------|------------------|------------------|------------------|-----------------|-----------------|------------------|-----------------|---------------------|------------------|-----------------|----------------------|
| 00508-1110 | 110 TON 100 TONNE | 400 TON 360 TONNE | 4-1/2 IF API | 10-3/4" 273mm | 6" 152mm | 3-1/4" 83mm | 2-1/2" 64mm | 4-3/4" 121mm | 2-7/8" 72mm | 35" 889mm | 7-7/16" 189mm | 6-5/8" 169mm | 420 lb 190 kg |
| 00508-1165 | 165 TON 150 TONNE | 600 TON 540 TONNE | 4-1/2 IF API | 10-3/4" 273mm | 6-1/2" 165mm | 3-1/2" 89mm | 3" 76mm | 5-1/2" 140mm | 3" 76mm | 38" 965mm | 7-7/16" 190mm | 6-5/8" 169mm | 580 lb 260 kg |
| 00508-1220 | 220 TON 200 TONNE | 750 TON 680 TONNE | 6-5/8 REG API | 12-1/2" 318mm | 7" 178mm | 4" 102mm | 3-1/2" 89mm | 6-1/2" 165mm | 4" 102mm | 41-7/8" 1064mm | 8-1/4" 209mm | 7-3/4" 196mm | 860 lb 390 kg |
| 00508-1350 | 350 TON 320 TONNE | 1250 TON 1130 TONNE | 7-5/8 REG API | 16" 406mm | 9" 229mm | 5" 127mm | 4-1/2" 114mm | 8-1/2" 216mm | 4-1/2" 114mm | 50-11/16" 1287mm | 9-1/4" 234mm | 9-1/4" 235mm | 1,690 lb 770 kg |
| 00508-1351 | 350 TON 320 TONNE | 1250 TON 1130 TONNE | 6-5/8 FH API | 16" 406mm | 9" 229mm | 5" 127mm | 4-1/2" 114mm | 8-1/2" 216mm | 4-1/2" 114mm | 50-11/16" 1287mm | 8-7/8" 225mm | 8-1/2" 216mm | 1,690 lb 770 kg |
| 00508-1500 | 500 TON 450 TONNE | 1750 TON 1580 TONNE | 7-5/8 REG API | 19-1/2" 495mm | 10-1/2" 267mm | 5-1/2" 140mm | 5-1/2" 140mm | 9-3/4" 248mm | 5-1/4" 133mm | 55-9/16" 1411mm | 9-1/4" 234mm | 9-1/4" 235mm | 2,700 lb 1,230 kg |
| 00508-1700 | 700 TON 640 TONNE | 2500 TON 2270 TONNE | 7-5/8 REG API | 23" 584mm | 12-1/2" 318mm | 6-1/2" 165mm | 6-1/2" 165mm | 11-1/2" 292mm | 5-1/2" 140mm | 65-7/16" 1663mm | 9-1/2" 241mm | 9-1/4" 235mm | 4,120 lb 1,880 kg |

MAXI DUB-Swivel®

Type 7 - API Pin / Clevis for MAXI Rigs

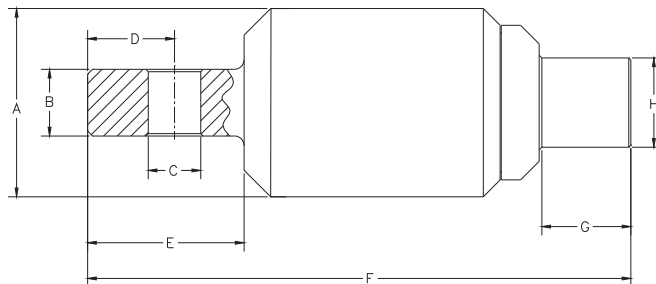


| Part Number | Safe Working Limit | Ultimate Load | Pin Thread | A | B | C | D | E | F | G | H | J | Net Weight |
|-------------|----------------------|------------------------|-----------------|------------------|------------------|-----------------|-----------------|------------------|-----------------|---------------------|------------------|-----------------|----------------------|
| 00508-7500 | 500 TON 450 TONNE | 1750 TON 1580 TONNE | 6-5/8 FH API | 19-1/2" 495mm | 10-1/2" 267mm | 5-1/2" 140mm | 5-1/2" 140mm | 9-3/4" 248mm | 5-1/4" 133mm | 64-3/4" 1645mm | 12-1/8" 308mm | 9-1/4" 235mm | 2,700 lb 1,230 kg |
| 00508-7700 | 700 TON 640 TONNE | 2500 TON 2270 TONNE | 6-5/8 FH API | 23" 584mm | 12-1/2" 318mm | 6-1/2" 165mm | 6-1/2" 165mm | 11-1/2" 292mm | 5-1/2" 140mm | 72-11/16" 1847mm | 12-1/8" 308mm | 9-1/4" 235mm | 4,120 lb 1,880 kg |



MAXI DUB-Swivel®

Type 8 - API Box / Lug for MAXI Rigs



| Part Number | Safe Working Limit | Ultimate Load | Pin Thread | A | B | C | D | E | F | G | H | Net Weight |
|-------------|----------------------|------------------------|------------------|------------------|-----------------|------------------|-------------|-------------------|--------------------|-----------------|-----------------|----------------------|
| 00508-8500 | 500 TON 450 TONNE | 1750 TON 1580 TONNE | 7-5/8 REG API | 19-1/2" 495mm | 5-3/4" 146mm | 5-1/2" 140mm | 9" 229mm | 17-7/16" 444mm | 57-9/16" 1461mm | 9-1/2" 241mm | 9-1/4" 235mm | 2,700 lb 1,230 kg |
| 00508-8501 | 500 TON 450 TONNE | 1750 TON 1580 TONNE | 7-5/8 REG API | 19-1/2" 495mm | 6-7/8" 175mm | 5-7/16" 138mm | 9" 229mm | 16-3/16" 412mm | 56-5/16" 1430mm | 9-1/4" 234mm | 9-1/4" 235mm | 2,700 lb 1,230 kg |

General information

These Pullback Swivels are designed specifically for Horizontal Directional Drilling applications.

The most important feature of this patented product is the sealing system. The multiple sealing stages become progressively finer so that a simple oil seal is not required to keep out sand and other coarse particles which can easily destroy such a seal. DCD starts with a gap seal that keeps out the larger particles, then a mechanical seal with lapped steel rings rotating against each other. This seal is designed for use in such applications as cement mixers or military tanks used in desert conditions. For the final stage of protection, a lip seal is used directly in front of the bearings. In addition to the sealing system, these swivels offer a lubrication system complete with relief valve so that the seals cannot be damaged by over greasing. Grease need only be applied in small quantities since loss of lubricant is almost non-existent.

MAXI DUB-Swivels utilize a proven Spherical Roller, Cylindrical Roller and Tapered Roller Bearing combination. The tension load carrying Spherical Roller Bearing does not offer adequate side load protection and therefore the use of the Cylindrical Roller Bearing for extra support is added.

The DUB-Swivel bearings are designed to provide a life span in excess of 700 hours. This life span is based on proper usage of the swivel – severe side or shock loads as well as maintenance and care will affect these expectations. Close attention must be paid to the product information sheets that accompany each swivel shipped.

All mechanical components are designed to withstand a tensile load of 3-1/2 times the Safe Working Limit typically.

All MAXI DUB-Swivels are built with individually assigned serial numbers and complete material traceability for every component.