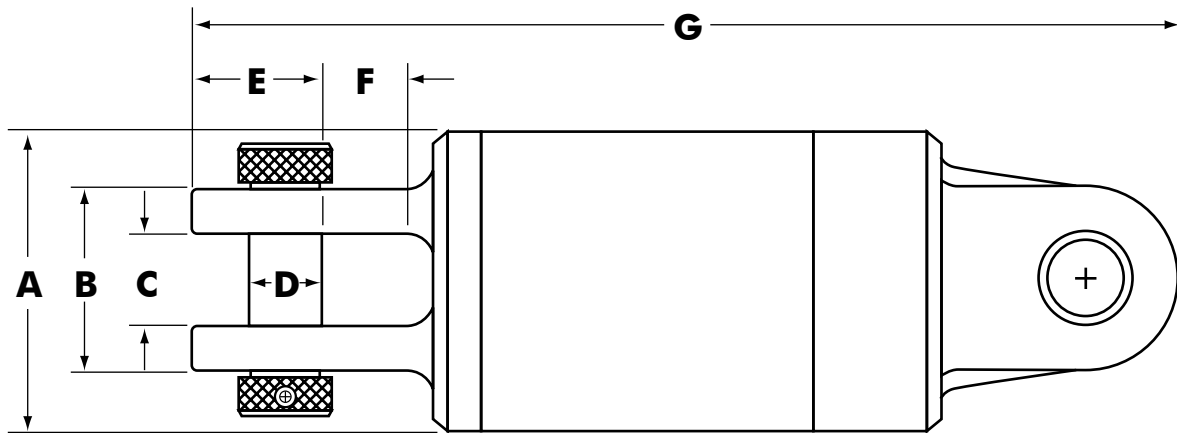


1. The DUB Swivel® is specifically designed for directional applications. It is intended for coupling the cutting head to the utility being pulled back. The swivel permits rotation of the cutting head and drill pipe while protecting the utility from twisting. Always pull tension on the swivel before rotating.
2. The Type 2 swivel has a female clevis located on each end.



DUB-SWIVEL® TYPE 2 DIMENSIONS										
Part Number	Safe Working Limit (lbs)	Ultimate Load (lbs)	A (in)	B (in)	C (in)	D (in)	E (in)	F (in)	G (in)	Net Weight (lbs)
00508-202	5,000	25,000	2	2	1	11/16	1-3/16	13/16	7-1/2	4
00508-205	10,000	50,000	3-1/8	2-1/4	1-1/4	3/4	1-5/16	7/8	11-1/2	16
00508-210	20,000	100,000	3-3/4	2-3/4	1-1/2	1	1-5/8	15/16	13-5/8	28
00508-215	30,000	150,000	4-3/4	3-1/4	1-3/4	1-1/8	2-1/16	1-7/16	18	62
00508-220	40,000	200,000	5-3/4	3-1/2	1-3/4	1-3/8	2-1/2	1-7/16	18-1/2	91
00508-230	60,000	300,000	6	3-1/2	1-3/4	1-3/8	2-1/2	1-7/16	18-1/2	95
00508-240	80,000	400,000	6-1/2	4-5/8	2-1/8	1-3/4	3-5/16	1-7/8	24-1/2	175
00508-260	120,000	600,000	7-1/2	5-1/2	2-3/4	2-1/8	3-5/8	2-5/8	29	240
00508-280	160,000	800,000	9	6	3-1/4	2-1/2	4-13/16	2-3/4	33-1/2	425

Dimensions and weights subject to change without notice.

The Safe Working Limit is calculated using a 5:1 safety factor based on the ultimate load.

The Ultimate Load is the tensile loading required to separate the DUB Swivel® into two or more parts.