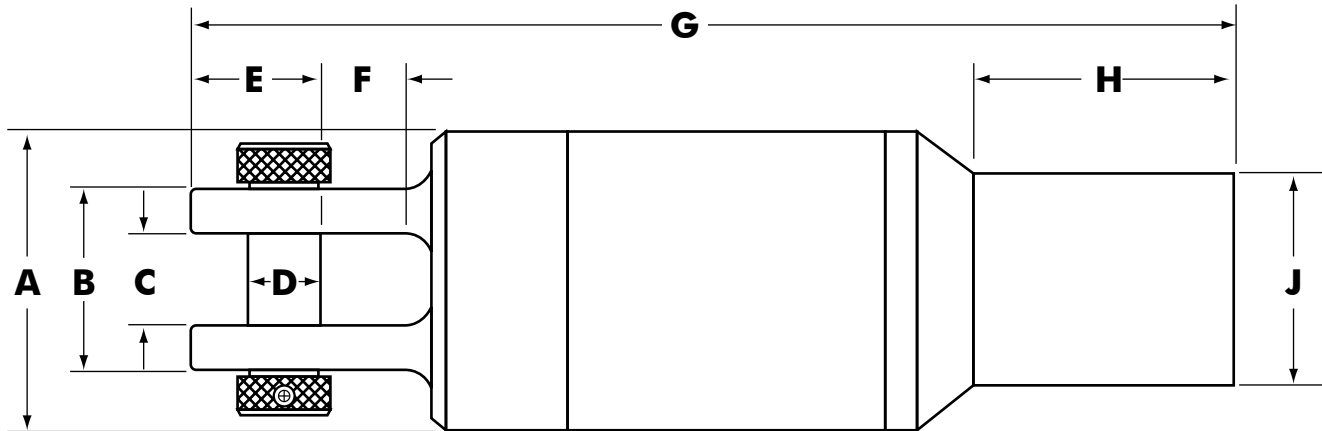


1. The DUB Swivel® is specifically designed for directional applications. It is intended for coupling the reamer head to the utility being pulled back. The swivel permits rotation of the drill pipe while protecting the utility from twisting. Always pull tension on the swivel before rotating.
2. The Type 1 swivel has a female clevis located on one end and an API box connection on the other.



DUB-SWIVEL® TYPE 1 DIMENSIONS

Part Number	Safe Working Limit (lbs)	Ultimate Load (lbs)	API Box Thread Size (in)	A (in)	B (in)	C (in)	D (in)	E (in)	F (in)	G (in)	H (in)	J (in)	Net Weight (lbs)
00508-115C	30,000	150,000	2-3/8 I.F.	4-3/4	3-1/4	1-3/4	1-1/8	2-1/16	1-7/16	19-1/4	4-5/8	3-3/8	62
00508-120C	40,000	200,000	2-3/8 I.F.	5-3/4	3-1/2	1-3/4	1-3/8	2-1/2	1-7/16	19	4-5/8	3-3/8	90
00508-120D	40,000	200,000	2-7/8 I.F.	5-3/4	3-1/2	1-3/4	1-3/8	2-1/2	1-7/16	19-1/4	5-1/8	4-1/8	91
00508-130D	60,000	300,000	2-7/8 I.F.	6	3-1/2	1-3/4	1-3/8	2-1/2	1-7/16	19-1/4	5-1/8	4-1/8	96
00508-130E	60,000	300,000	3-1/2 I.F.	6	3-1/2	1-3/4	1-3/8	2-1/2	1-7/16	19-3/4	5-5/8	4-3/4	98
00508-140E	80,000	400,000	3-1/2 I.F.	6-1/2	4-5/8	2-1/8	1-3/4	3-5/16	1-7/8	24-1/2	5-5/8	4-3/4	177
00508-140F	80,000	400,000	4-1/2 I.F.	6-1/2	4-5/8	2-1/8	1-3/4	3-5/16	1-7/8	25-1/2	6-1/8	6-1/2	180
00508-160F	120,000	600,000	4-1/2 I.F.	7-1/2	5-1/2	2-3/4	2-1/8	3-5/8	2-5/8	30	6-1/8	6-1/2	250
00508-180F	160,000	800,000	4-1/2 I.F.	9	6	3-1/4	2-1/2	4-13/16	2-3/4	31-1/4	6-1/8	6-5/8	390
00508-1150	300,000	1,500,000	6-5/8 REG	12-1/2	7	4	3-1/2	6-1/2	5	40-1/2	6-3/4	7-3/4	875
00508-1250	500,000	2,500,000	7-5/8 REG.	16	9	5	4-1/2	8-1/2	6	48-1/2	7-1/4	9-1/4	1768
00508-1500*	1,000,000	5,000,000	7-5/8 REG.	23	12	6-1/2	6-1/2	11-1/4	8	54	6-3/4	9-1/4	4150

*Special Order Item, please allow 6-8 week delivery.

Dimensions and weights subject to change without notice.

The Safe Working Limit is calculated using a 5:1 safety factor based on the ultimate load.

The Ultimate Load is the tensile loading required to separate the DUB Swivel® into two or more parts.